

# APOLLO

## A350 SERIES

# APARTMENT COMPACTOR

### FEATURES INCLUDE:

- 1/4" INTEGRAL MAINFRAME / HOPPER DESIGN
- 3/8" A.R. FLOOR PLATE FOR LONGER LIFE
- SINGLE SIDE LATCH OPTION
- DUAL 3" BORE X 2" ROD CYLINDERS
- 80% AND 100% FULL LIGHTS WITH AUTOMATIC SHUTDOWN
- KEY ON/OFF PHOTO EYE OPERATION MANUAL FOR/REV EMERGENCY STOP POWER ON LIGHT
- MICROPROCESSOR CONTROLS WITH EASY READ OUT FOR PROGRAMMING AND TROUBLESHOOTING.
- UL LISTED CONTROL PANEL



**MULTIPLE HOPPER VARIATIONS TO SUIT RECYCLING SYSTEMS AND HAND FED APPLICATIONS.**

# PRODUCT DATA AND RATINGS

## GENERAL

COMPACTOR MODEL	<b>APOLLO A350</b>	
CHAMBER CAPACITY - MFR	0.30 CU.YDS.	
CHAMBER CAPACITY - WASTEC	0.25 CU.YDS	
CHAMBER CLEAR TOP OPENING	24" x 30"	
TOP OPENING	40" x 30.5"	
RAM DIMENSIONS	18" x 30.5"	
OVERALL DIMENSIONS	A350	45"L x 36"W x 36"H
	A350-12	45"L x 36"W x 48"H
	A350-16	45"L x 36"W x 52"H
	A350-30	45"L x 36"W x 67"H
EST. SHIPPING WT. ( INCL. POWER PACK)	1400 TO 1570 LBS	

## PERFORMANCE CHARACTERISTICS

CYCLE TIME	21 SECS.
CAPACITY PER HOUR	60 CU.YDS.
RAM PENETRATION	5"
RAM FACE PRESSURE (N) @ 1600 PSI	41 PSI
RAM FACE PRESSURE (M) @ 1800 PSI	46.5 PSI
PACKING FORCE (N) @ 1600 PSI	22,500 LBS
PACKING FORCE (M) @ 1800 PSI	25,500 LBS

## STRUCTURAL CHARACTERISTICS

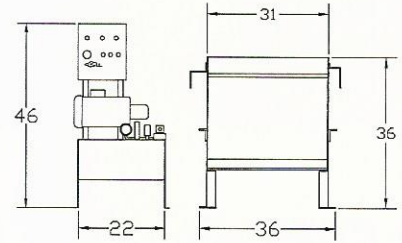
MAIN FRAME AND HOPPER	1/4" HRS PLATE
IMPACT PLATE	1/4" HRS PLATE
FLOOR PLATE	3/8" A.R.PLATE
RAM FACE PLATE	3/8" HRS PLATE

## ELECTRICAL SPECIFICATIONS

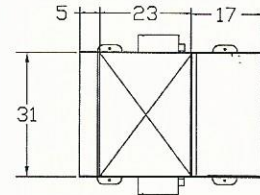
REMOTE POWER PACK DIMENSIONS	46"H x 22"W x 14"D
MOTOR	5HP
MOTOR POWER	208/230/460V, 3PH, 30 AMPS
CONTROL VOLTAGE	120VAC (24VDC OPTION)
CIRCUITS CONTROLLER	ZELIO PLC PROCESSOR
MONITORS	80% & 100% FULL
PHOTO ELECTRIC EYE	OMRON E3K
DOOR SAFETY SWITCH	TELEMECANIQUE
CONTROL PANEL	UL LISTED

## HYDRAULIC SPECIFICATIONS

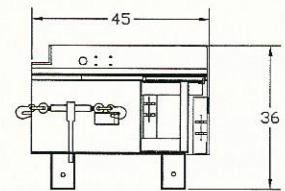
CYLINDERS	DUAL 3" BORE, 2" ROD
HYDRAULIC PUMP CAPACITY	6 GPM
OIL TANK CAPACITY	12 GALS.
OPERATING PRESSURE	1600 PSI
RELIEF PRESSURE	1800 PSI
MAXIMUM RATED PRESSURE	3000 PSI



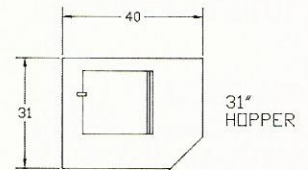
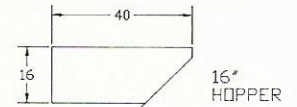
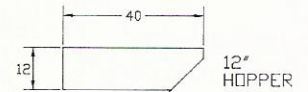
FRONT



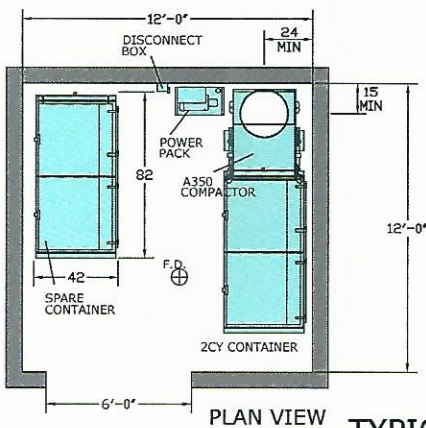
PLAN



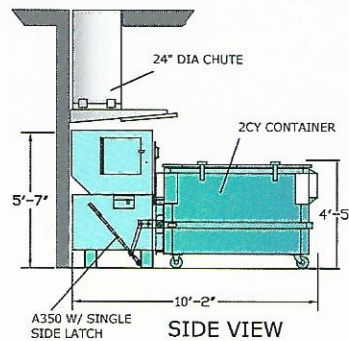
SIDE



STANDARD HOPPER SIZES



TYPICAL LAYOUT



SIDE VIEW

**APOLLO WELDING AND FABRICATING, INC.**

35600 CURTIS BLVD, EASTLAKE, OHIO 44095

**PH: 440 942 0227**

**FAX: 440 942 0127**

apollo@apollowelding.com

www.apollowelding.com

**DISTRIBUTED BY:**